

DESIGN 2.0

Dry Gas Coupling



MannTek

ELAFLEX 

DESIGN 2.0

- A NEW STATE OF THE ART DGC

NEW DESIGN LANGUAGE

- Design based on handling and ergonomics
- Integrated shape of body, handles and bumper
- Bumper with guidance covering the roll axles
- Detail finish by new manufacturing methods
- Cylindrical handle interface reduces volume

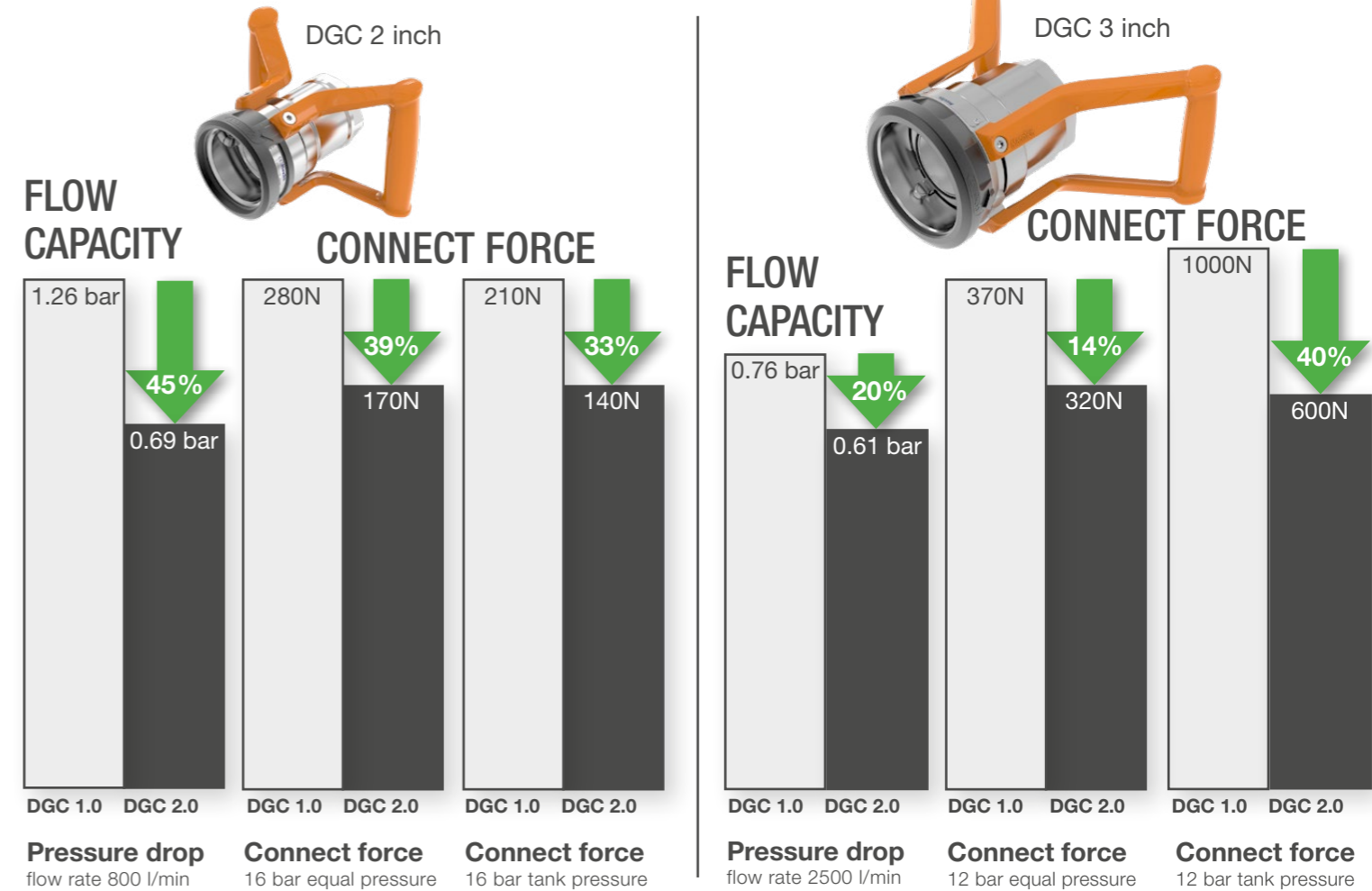
NEW MARKET LEADING PERFORMANCE

- Up to 45% improved flow capacity
- Up to 40% reduction of coupling force
- Leading user ergonomics through force reduction and optimized handle design

MAJOR CUSTOMER BENEFITS

- More convenient handling with reduced stress on muscles and joints
- Improved flow rate means shorter loading time and reduced energy consumption
- Increase of durability, through force reduction and new materials
- MannTek's easy-to-service design kept unchanged!

This diagram illustrates the performance improvements, measured in percentages, between our established coupling 1.0 and the new Design 2.0. The enhanced design has resulted in a significant improvement, with performance gains above 45% for flow capacity and above 40% for connect forces.



OPTIMISED ERGONOMICS

IMPROVED DURABILITY

CONNECTION INDICATOR

INCREASED FLOW RATE

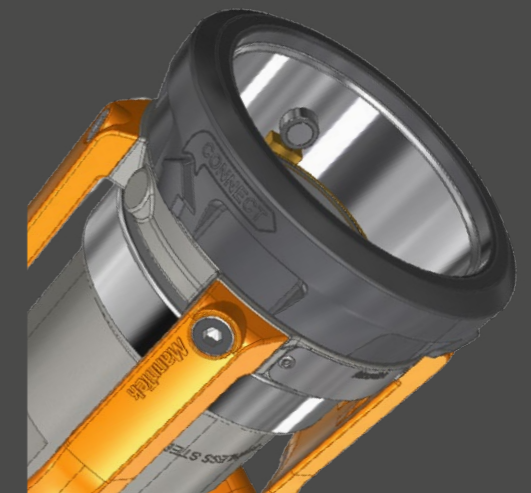
INTEGRATED PRODUCT DESIGN FOR SUPREME PERFORMANCE AND HANDLING

With experience of more than one million couplings delivered over 25 years, MannTek decided to set a new standard for DGC couplings. The Original Design 1.0 is known for its highly competitive performance and is well-regarded worldwide. The new Design 2.0 is a careful evolutionary redesign, based on results from field studies and user tests.

With Design 2.0 both flow capacity and user ergonomics have been improved to a new state of the art level. The flow capacity is increased above 45% through design optimisation, and has been verified in a number of incremental flow rate simulations.

The ergonomics are improved on a number of points:

- Clear visual indicators for easier alignment
- Connect forces reduced up to 40%
- New handle design offers a more convenient, balanced and effective handling, beside a more compact rotation volume
- Design 2.0 offers more optional feature combinations like sensors, locking device, stop before disconnect etc.



THE ELAFLEX GROUP



Contact data of our approximately 150 distribution partners worldwide:
elaflex.de/en/contact/distribution-partners

ELAFLEX WORLDWIDE

Air Traffic Trade AB Sweden	Måttbandsvägen 12 18766 Täby Tel. +46 8-768 39 90 info@airtt.se airtt.se	ELAFLEX FRANCE SARL France	Aktipark 50 Rue des Chardonnerets, Lot N° 3 93290 Tremblay en France Tel. +33 1 41 84 06 22 info@elaflex.fr elaflex.fr	ELAFLEX Yakıt İletim Ürünleri Ltd. Şti. Turkey	42 Maslak Plaza Ahi Evran Street No:6 34485 Maslak - Sarıyer İstanbul, Turkey Tel. +90 212 974 1020 batuhan.kiroglu@elaflex.com elaflex.com.tr
Aljac Fuelling Components Ltd. Germany	c/o ELAFLEX HIBY GmbH & Co. KG Schnackenburgallee 121 22525 Hamburg Tel. +49 40 6908 4116 info@aljac.de aljac.de	ELAFLEX ITALIA SRL Italy	Via Industriale 28 25086 Rezzato (BS) Tel. +39 030 249 61 00 info@elaflex.it elaflex.it	Mann Teknik AB Sweden	Strandvägen 16 54231 Mariestad Tel. +46 501 39 32 00 sales@manntek.se manntek.se
Aljac Fuelling Components Ltd. Great Britain	Unit 1a, Watchmore Point Camberly, Surrey GU15 3AD Tel. +44 1932 269869 sales@aljac.com aljac.com	ELAFLEX Latin America S.A. Argentina	Av. Dardo Rocha 2524 Piso 1° Martinez (1640) Buenos Aires, Argentina Tel. +54 11 4836-3510 ventas.latinamericah@elaflex.com.ar elaflex.com.ar	Mann Teknik China China	Building C, No 505, 23rd Street, Qian Tang District, Hangzhou Tel. +86 571-87695112 info@manntek.cn manntek.cn
DANTEC LTD Great Britain	Tarran Way, Moreton, Wirral CH46 4TL Tel. +44 151 678 2222 sales@dantec.com dantec.com	ELAFLEX LTD Great Britain	Riverside House Plumpton Road Hoddesdon, Herts EN11 0PA Tel. +44 1992 45 29 50 sales@elaflex.co.uk elaflex.co.uk	MannTek Couplings India Pvt. Ltd. India	Office No. LF7A/7B Lotus Aura, Sama -Savli Road, Vadodara - 390008, Gujarat Tel. +91 9558 825 855
ditec Gruppe Germany	An der Staustufe 6 97318 Kitzingen Tel. +49 9321 2307-0 info@ditec-adam.de ditec-adam.de	ELAFLEX NV Belgium	Merksemsesteenweg 192 2100 Deurne (Antwerp) Tel. +32 3 32 80 420 info@elaflex.be elaflex.be	Oasis Engineering Limited New Zealand	129 Birch Avenue Tauranga, 3110 Tel. +64 7 928 3808 info@oasisngv.com oasisngv.com
ELAFLEX AB Sweden	Måttbandsvägen 12 18766 Täby Tel. +46 8 980 130 info@elaflex.se elaflex.se	ELAFLEX PACIFIC PTY LTD Australia	Unit 29/58 Box Road Taren Point NSW 2229 Tel. +61 2 9525 0945 info@elaflex.com.au elaflex.com.au	SGB GmbH Germany	Hofstraße 10 57076 Siegen Tel. +49 271 48964-0 sgb@sgb.de sgb.de
ELAFLEX HIBY Asia-Pacific Pte. Ltd. Singapore	Mr. Patrick Velten Office Singapore Tel. +65 9 877 5664 patrick.velten@elaflex.com	ELAFLEX Representation Office China	Mr. Jing Fan Room 1120, 1101 South Pudong Road, 200120 Shanghai, P.R. China Tel. +86 21 505 414 54 fan.jing@elaflex.net.cn elaflex.com		
ELAFLEX BRAZIL Eireli Brazil	Avenida Brigadeiro Luis Antonio, N° 300 8º andar sala 82 Bela vista, São Paulo-SP Brazil - CEP 01318-903 Tel. +55 11 4153-2171 vendas.brasil@elaflex.com.ar elaflex.com.ar	ELAFLEX US Inc. USA	7050 Village Drive, Suite C Buena Park, CA 90621 Tel. +1 888 472 7444 info@elaflexus.com elaflexus.com		



ELAFLEXHIBY GmbH & Co. KG
 Schnackenburgallee 121
 22525 Hamburg | Germany
 Tel. +49 40 540005-0
 info@elaflex.de
 elaflex.com