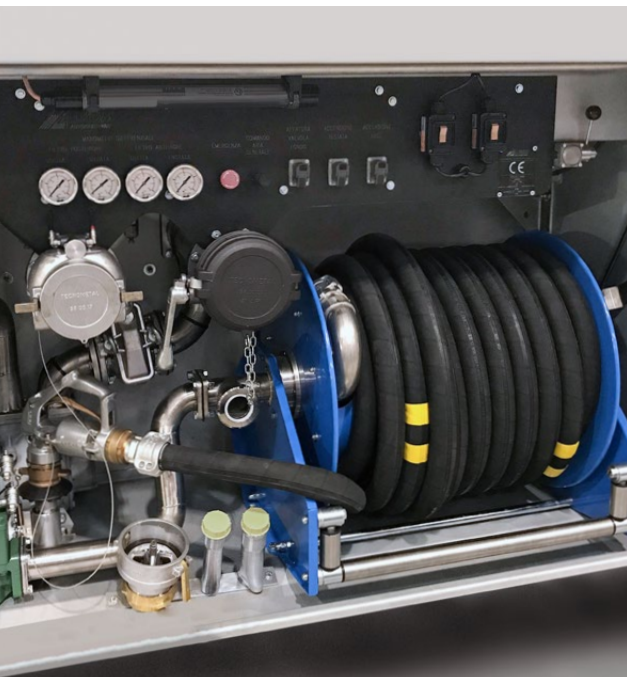


# HOSE REELS

Custom-Made,  
for Terminals  
and Road Tankers



# HOSE REELS - COILED, CLEAN & TIDY

ELAFLEX is best known for its range of refuelling hose assemblies and nozzles, globally used in the aviation, petrochemical, marine and defence industries.

We have extended our product range to include industrial hose reels. They are available in many standard configurations with the option to customise.

We provide several different rewind mechanisms, e.g. manual rewind, spring rewind, with electric, hydraulic and pneumatic motors which can also be driven with a remote control system.

All of our hose reels are produced to the highest quality standards, as is our philosophy, are compliant with CE regulations and meet with European health, safety and environmental standards.

Materials used in the hose reel construction are carefully chosen for each application, with options in carbon steel with polyester powder coated to any colour, aluminium or stainless steel 304 and 316L in any colour for more demanding conditions.

## Custom-Made, from Own Production

Our hose reels are modular designed to suit your space, media and operating requirements – almost anything is possible.

## Advantages

- high quality standard, longevity
- many options, modular construction
- delivery as complete, tested system including hoses, couplings and nozzles
- economical pricing
- short lead times



Standard Fuel Application

- Spring rewind hose reel
- Slimline 25 hose assembly
- ZVA 25 automatic nozzle



Defence Diesel Application

- Spring rewind hose reel
- XHD 38 hose assembly
- ZV 400 manual nozzle

# COMPLETE & CUSTOMISED SOLUTION

Whether standardised, popular options or completely customised hose reel systems: To choose a hose reel system suitable for your unique application please follow the Three Step Process or contact our sales team.

## 1. Select Hose and Coupling

(see page 4)



## 2. Select Nozzle

(see page 5)



## 3. Select Hose Reel

(see page 5/6)



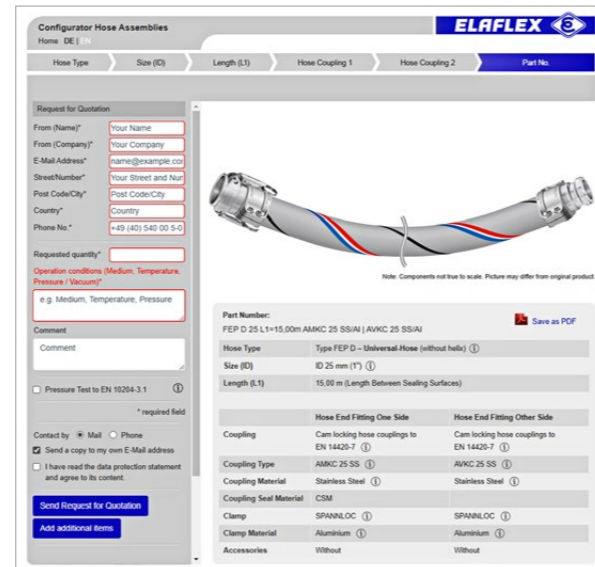
# 1. HOSE AND COUPLING SELECTION

Premium quality hose assemblies 'Made in Germany' from Elaflex have a proven superior service life. Due to high-tech rubber compounds, textile braided reinforcements and state of the art manufacturing they are perfectly suitable for applications in many industries worldwide.

With the **Elaflex Hose Configurator** the requested hose assembly can be chosen online, in a few simple steps: select hose type, size, length and fittings.

The additional selection guide and info-boxes help to find the best solution. For example, enter the medium used to show the recommended hoses.

[hoseconfigurator.elaflex.de](http://hoseconfigurator.elaflex.de)



# 2. NOZZLE SELECTION

The **Elaflex Nozzle Configurator** assists to choose the right nozzle to suit your requirements. Please use the 'Selection Guide' by choosing basic properties such as application, media or required flow rate.

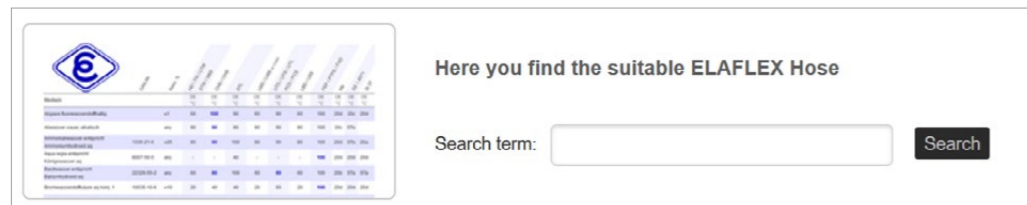
Please ensure that the nozzle outlet will fit to the hose coupling.

Commonly used nozzles for hose reel applications: ZVA Slimline 2, ZVA AdBlue HV, ZVA 25, ZVA 32, ZV 400, ZVF 50

[nozzleconfigurator.elaflex.de](http://nozzleconfigurator.elaflex.de)



Additionally, you can use our **Chemical Resistance Chart** to find the most suitable hose for the job. This extra online tool enables you to see the resistance of our Elaflex rubber hoses at various concentrations and temperatures.



[elaflex.de/resistance](http://elaflex.de/resistance)

# 3. HOSE REEL SELECTION

Our hose reels are suitable for **a wide range of media**, e.g. gasoline, diesel, Jet fuels, urea solution (AdBlue®), detergents, disinfectants, solvents, oils, water and gases. They cover operating pressures from **1 to 350 bar** and can be built to hold hose sizes from **DN 13 to DN 200** and any length. Depending on the hose length and available space, they can be designed on a 'long and low' or 'high and narrow' drum to suit the application.

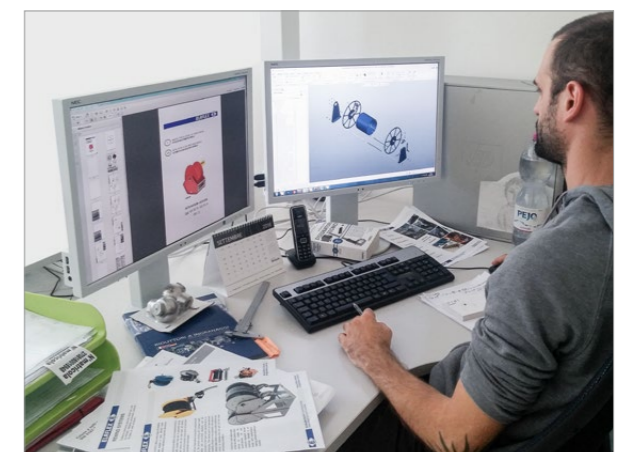
Our technical department will design hose reels according to individual user specific requirements. The following options can be chosen:

- application / media
- installation dimensions
- colour
- open or closed disks
- mounting position (wall or on plane surface)
- guiding system and its positioning
- rewind mechanism (see page 6)
- if necessary, remote control system
- optional: cabinets to position or protect the hose reel



Threaded, Camlock or Dry Disconnect Couplings: There is an extensive range of connection systems available ex stock.

Elaflex hose end fittings are technologically state of the art in accordance with the highest safety measures. They are reliable, robust and long lasting and set standards in fuels transfer industry.



# HOSE REEL TYPES

**Manual Rewind**  
Hose reel with handle



Also available with chain transmission for bigger sizes.

**Spring Rewind**  
Hose reel with automatic spring-loaded rewind system



Suitable for retraction of hoses up to 25 m in DN 50 mm.

**Electric Rewind**  
Hose reel with electric motor



Electric motors available:  
AC = 230 / 400 V  
DC = 12 V / 24 V  
Optionally with ATEX certified motors.

**Hydraulic Rewind**  
Hose reel with hydraulic motor



The motor is always provided with levers to operate.

**Pneumatic Rewind**  
Hose reel with pneumatic motor

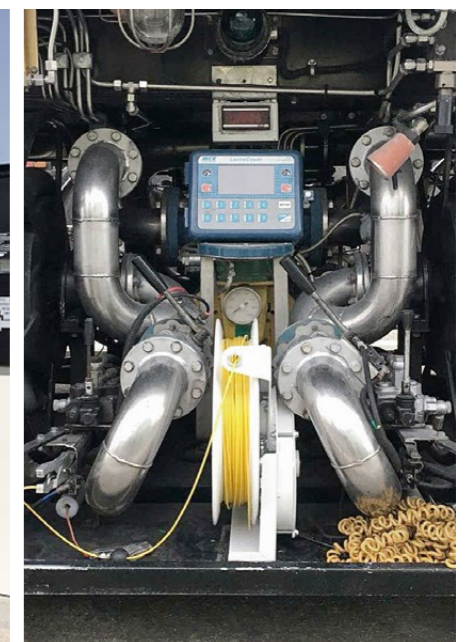
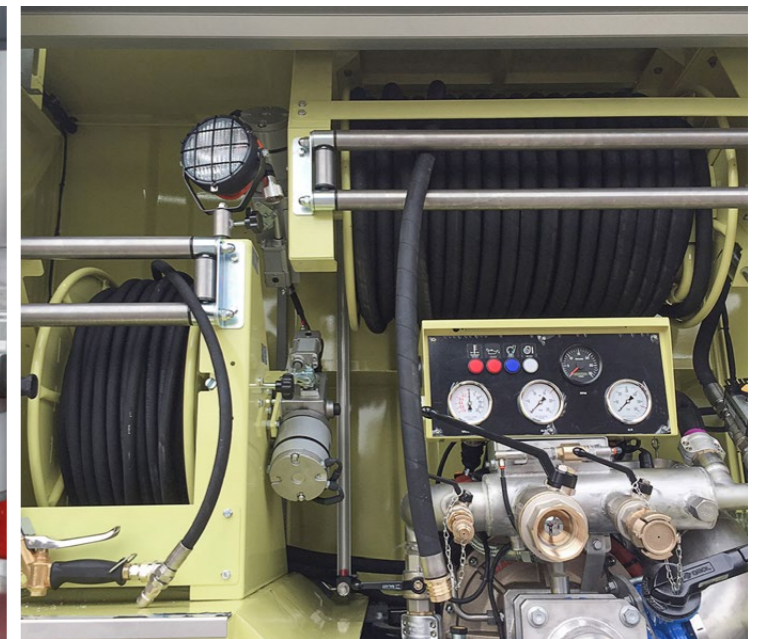
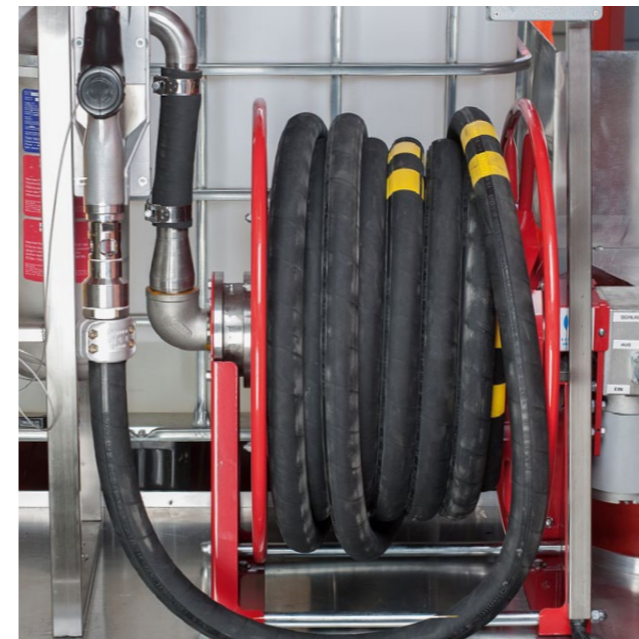
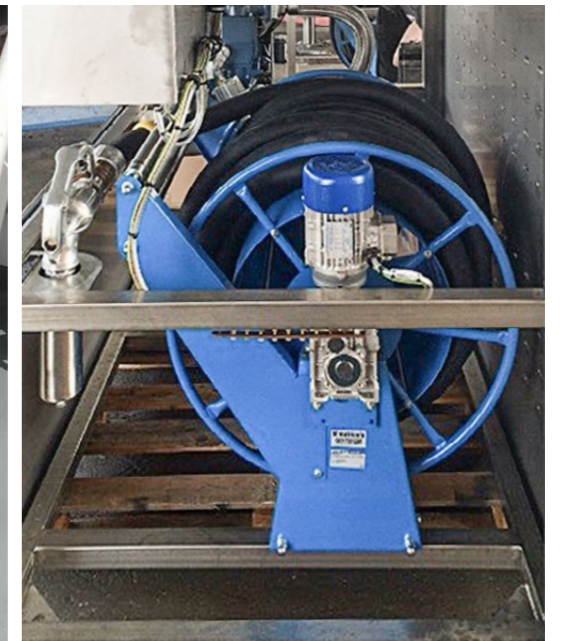


Optionally available with 'ON/OFF' kit to operate the hose reel.

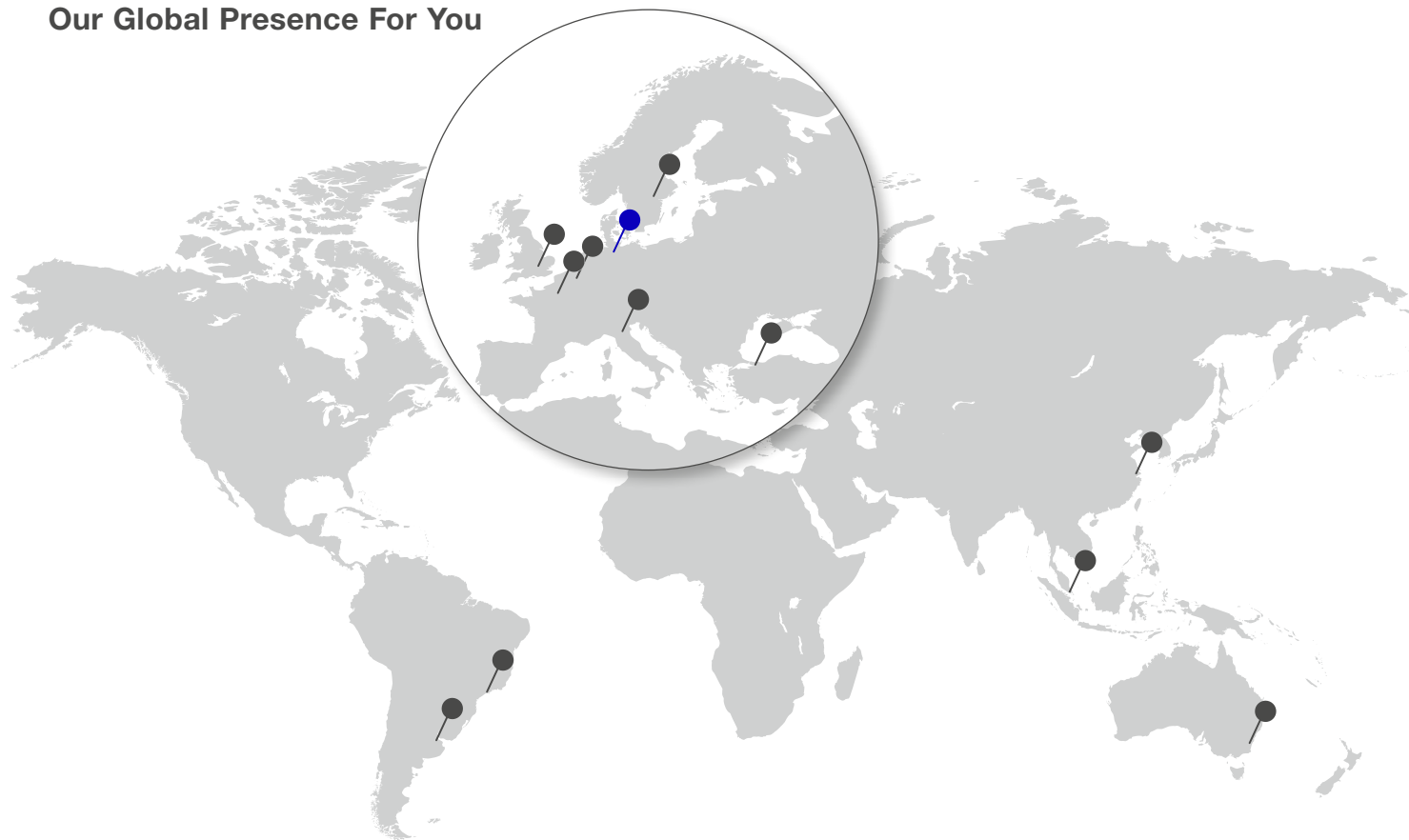
**Additional Product: Bonding Reel**  
Reel with spring rewind mechanism



Frame available in polyester powder coated steel, UV resistant or stainless steel and any colour.  
High visibility grounding cable, up to 30m, DN 6mm and different types of clamps.



## Our Global Presence For You



● **ELAFLEX NV**  
**Belgium**

Merksemsesteenweg 192  
2100 Deurne (Antwerpen)  
Tel. +32 3 32 80 420  
Fax +32 3 32 43 740  
E-Mail: [info@elaflex.be](mailto:info@elaflex.be)  
Web: [www.elaflex.be](http://www.elaflex.be)

● **ELAFLEX**  
Yakit Teknolojileri Ltd.  
**Turkey**

Mr. Batuhan Kiroglu  
Istanbul, Turkey  
Tel. +90 5 324 24 33 73  
E-Mail: [batuhan.kiroglu@elaflex.com](mailto:batuhan.kiroglu@elaflex.com)  
Web: [www.elaflex.com.tr](http://www.elaflex.com.tr)

● **ELAFLEX**  
Representation  
Office  
**China**

Mr. Jing Fan, Room 1120,  
1101 South Pudong Road,  
200120 Shanghai  
P.R. China  
Tel. +86 21 505 414 54  
Fax +86 21 58 76 13 78  
E-Mail: [fan.jing@elaflex.net.cn](mailto:fan.jing@elaflex.net.cn)  
Web: [www.elaflex.com](http://www.elaflex.com)

● **ELAFLEX**  
ITALIA SRL  
**Italy**

Via Industriale 28  
25086 Rezzato (BS)  
Tel. +39 030 249 61 00  
Fax +39 030 249 61 80  
E-Mail: [info@elaflex.it](mailto:info@elaflex.it)  
Web: [www.elaflex.it](http://www.elaflex.it)

● **ELAFLEX**  
BRAZIL Eireli  
**Brazil**

Avenida Brigadeiro Luis Antonio,  
Nº 300 8º andar sala 82  
Bela vista  
Sao Paulo  
Brazil - CEP 01318-903  
Tel. +55 11 4153 2171  
Fax +55 11 96030 4444  
E-Mail: [vendas.brasil@elaflex.com.ar](mailto:vendas.brasil@elaflex.com.ar)  
Web: [www.elaflex.com.ar](http://www.elaflex.com.ar)

● **ELAFLEX AB**  
**Sweden**

Svärdvägen 27  
18233 Danderyd  
Tel. +46 8 980 130  
Fax +46 8 980 134  
E-Mail: [info@elaflex.se](mailto:info@elaflex.se)  
Web: [www.elaflex.se](http://www.elaflex.se)

● **ELAFLEX**  
Latin America S.A.  
**Argentina**

Talcahuano 925 piso 1º  
(B1640CZE) Martinez  
Buenos Aires  
Argentina  
Tel. +54 11 4717 3510  
E-Mail: [ventas.latinamerica@elaflex.com.ar](mailto:ventas.latinamerica@elaflex.com.ar)  
Web: [www.elaflex.com.ar](http://www.elaflex.com.ar)

● **ELAFLEX LTD**  
**Great Britain**

Riverside House  
Plumpton Road  
Hoddesdon, Herts EN11 0PA  
Tel. +44 1992 45 29 50  
Fax +44 1992 45 29 11  
E-Mail: [sales@elaflex.co.uk](mailto:sales@elaflex.co.uk)  
Web: [www.elaflex.co.uk](http://www.elaflex.co.uk)

● **ELAFLEX**  
Pacific Pty. Ltd.  
**Australia**

Unit 29/58 Box Road  
Taren Point NSW 2229  
Australia  
Tel. +61 2 8058 9258  
Fax +61 2 8058 9240  
E-Mail: [info@elaflex.com.au](mailto:info@elaflex.com.au)  
Web: [www.elaflex.com.au](http://www.elaflex.com.au)

● **ELAFLEX**  
France SARL  
**France**

Aktipark  
50 Rue des Chardonnerets,  
Lot N° 3  
93290 Tremblay en France  
Tel. +33 1 41 84 06 22  
Fax +33 1 48 63 21 92  
E-Mail: [info@elaflex.fr](mailto:info@elaflex.fr)  
Web: [www.elaflex.fr](http://www.elaflex.fr)

● **ELAFLEX HIBY**  
Asia-Pacific PTE Ltd.  
**Asia/Pacific**

Mr. Patrick Velten  
Area Manager  
Singapore  
Tel. +65 9 877 5664  
E-Mail: [patrick.velten@elaflex.com](mailto:patrick.velten@elaflex.com)  
Web: [www.elaflex.com](http://www.elaflex.com)

● **ELAFLEX HIBY GmbH & Co. KG**

Schnackenburgallee 121  
22525 Hamburg | Germany

Telefon +49 40 540 00 50  
Fax +49 40 540 00 567  
E-Mail [info@elaflex.de](mailto:info@elaflex.de)  
Internet [www.elaflex.de](http://www.elaflex.de)